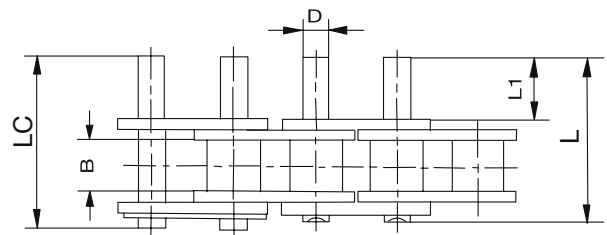
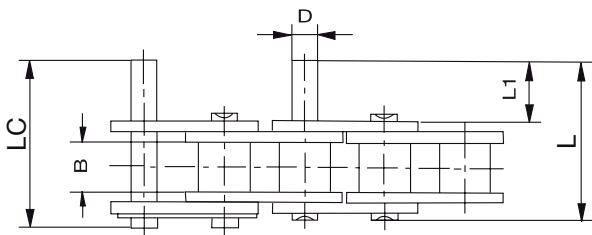
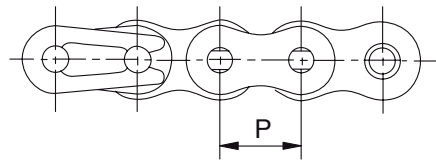
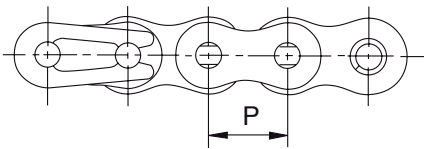


Roller chains with extended pins



Every 2 Pitches

Every Pitches



Reference DIN/ISO	P	B	D	L1	L	Lc
	mm	mm	mm	mm	mm	mm
*06B	9,525	5,72	3,28	11,3	23,4	24,4
08B	12,700	7,75	4,45	15,5	31,2	32,2
10B	15,875	9,65	5,08	17,8	36,1	37,5
12B	19,050	11,68	5,72	20,7	42,0	43,6
16B	25,400	17,02	8,28	33,2	68,0	69,3

* Straight plates

Also available in stainless steel

For other measures, please consult