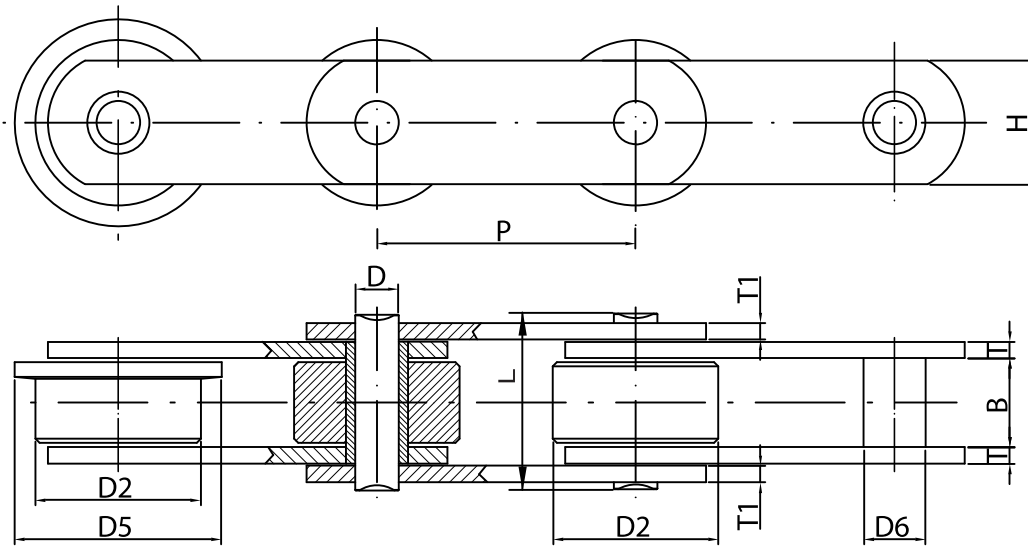


# Conveyor chains

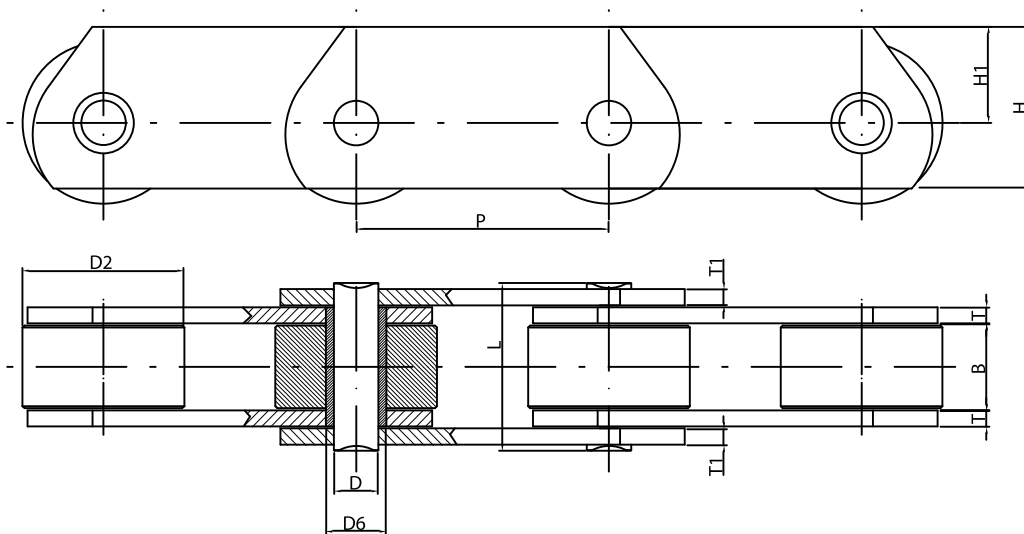
## Y series



Yuk reference	Standard pitches	Inner width	Bush diameter	Roller		Plates		Pin		Breaking load
				big diameter	flange diameter	width	thickness	diameter	length	
				D2	D5	H	T/T1	D	L max	
Y1	50,8 - 63,5 - 76,2 - 88,9 - 101,6 - 127,0 - 152,4	15	14	31,75	40,0	25	4	10	37	52,8
Y2	76,2 - 88,9 - 101,6 - 127,0 - 152,4 - 177,8 - 203,2	19	20	47,5	60,0	40	5/4	14	45	120,0
Y3	101,6 - 127,0 - 152,4 - 177,8 - 203,2 - 228,6	26	24	66,7	82,0	50	7/5	18	58	192,0
Y4	152,4 - 177,8 - 203,2 - 254,0	38	30	88,9	114,0	60	10/8	22	84	360,0

\* Other pitches upon request

# Conveyor chains YT series

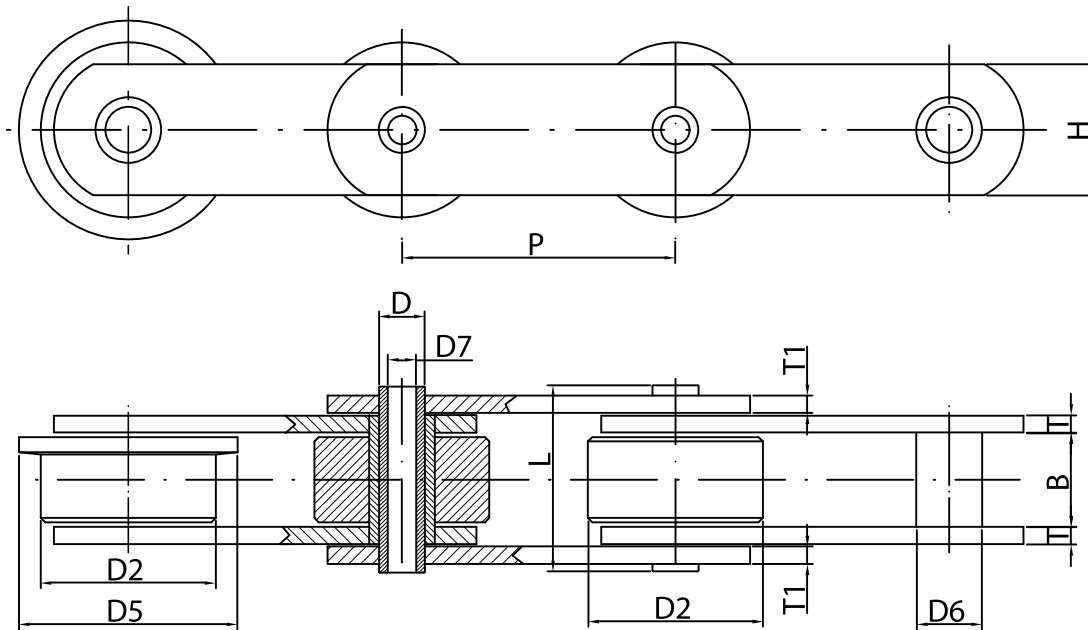


Yuk reference	Standard pitches	Inner width	Bush diameter	Roller diameter	Plates			Pin		Breaking load
					width	deep	thickness	diameter	length	
					H	H1	T/T1	D	L max	
YT1	50,8 - 63,5 - 76,2 - 88,9 - 101,6 - 127,0 - 152,4	15	14	31,75	40	27	4	10	37	52,8
YT2	76,2 - 88,9 - 101,6 - 127,0 - 152,4 - 177,8 - 203,2	19	20	47,5	50	30	5/4	14	45	120,0
YT3	101,6 - 127,0 - 152,4 - 177,8 - 203,2 - 228,6 - 254,0	26	24	66,7	70	45	7/5	18	58	192,0
YT4	152,4 - 177,8 - 203,2 - 254,0 - 304,8	38	30	88,9	90	60	10/8	22	84	360,0

\* Other pitches upon request

# Conveyor chains

## Series YC



Yuk reference	Standard pitches	Inner width	Bush diameter	Roller		Plates		Pins			Breaking load
				big diameter	flange diameter	width	thickness	outer diameter	inner diameter	length	
				D2	D5	H	T/T1	D	D7 min	L max	
YC1	50,8 - 63,5 - 76,2 - 88,9 - 101,6 - 127,0 - 152,4	15	18	31,75	40,0	25	4	14	10,2	37	40,0
YC2	76,2 - 88,9 - 101,6 - 127,0 - 152,4 - 177,8 - 203,2	19	22	47,5	60,0	40	5/5	18	13,2	45	105,6
YC3	101,6 - 127,0 - 152,4 - 177,8 - 203,2 - 228,6 - 254,0	26	36	66,7	82,0	50	7/5	30	20,2	58	142,8
YC4	152,4 - 177,8 - 203,2 - 254,0 - 304,8	38	36	88,9	114,0	60	10/8	30	22,2	83	288,0

\* Other pitches upon request